



Style  
F164  
(modified)

**Project Team:** Roma Design Group  
Randy Burkett Lighting Design,  
in collaboration with David Mintz  
McKissack & McKissack  
Turner Construction  
Tompkins Builders  
Gilford Corporation  
TM/R Engineering

**Photography:** Ron Solomon

### Inscription Walls:

Lengths: 235' (east) and 190' (west), following 285' radius

Heights: 4'-3" to 11'-9", angled at 7 degrees

Lighting: (127) 3' F164-T139-H-08-2-XX-0 with HOD08000 mounting hub end kits;  
units modified with internal cross-baffles and factory-installed through-wiring

Estimated illuminance: 20 fc avg. initial on wall surfaces

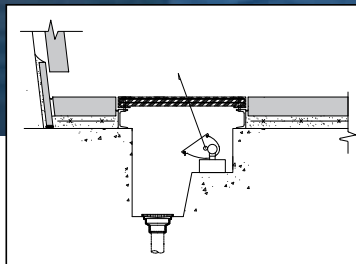
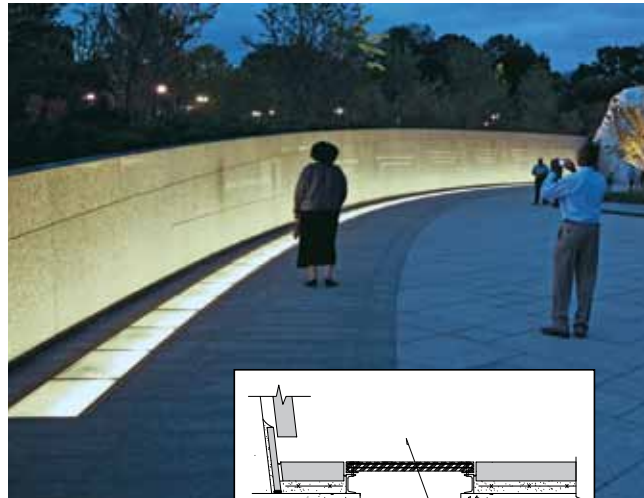
Estimated power density: 12.9 W/lineal foot

## elliptipar Style F164 (modified)

The Martin Luther King, Jr. National Memorial opened in 2011 on the National Mall, overlooking the Tidal Basin in a sightline between the Lincoln and Jefferson Memorials. The main pathway into the Memorial introduces visitors to a sculptural metaphor from one of Dr. King's speeches as they pass through an opening in the Mountain of Despair to meet the Stone of Hope hewn from it. From the Stone of Hope emerges the likeness of Dr. King, gazing into the open horizon across the Tidal Basin.

Flanking the Stone of Hope is the crescent shaped Inscription Wall. The angled granite form varies in height as it sweeps out from both sides of the sculpted mountain. It bears 14 hand-carved quotations, selections from Dr. King's 1955 to 1968 career, on topics of justice, democracy, hope and love. The inscriptions are in random chronological order to encourage a generalized traffic pattern.

**elliptipar Style F164s** modified with internal cross-baffles are located within recessed troughs, shining through laminated glass panels that are mounted flush with the surrounding pavement. Factory-supplied through-wiring expedited installation of (127) 3' luminaires along the curved walls. 3500K T5HO lamps were selected through an on-site mock-up to complement both the color and scale of the granite wall panels.



The concealed **F164s** provide a soft wash up the angled wall surfaces, highlighting the edges of the inscribed quotations.

The channel of light serves as an elegant, continuous element that is set against the varying paver dimensions and wall panel heights.

The **F164** is Cradle to Cradle Certified<sup>CM</sup>, designating environmental safety and reusability in component materials.



Cradle to Cradle Certified<sup>CM</sup> is a certification mark licensed by the Cradle to Cradle Products Innovation Institute.

