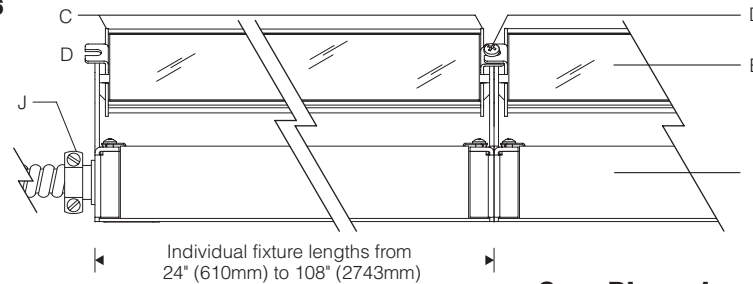


Style S316
1:4 Scale



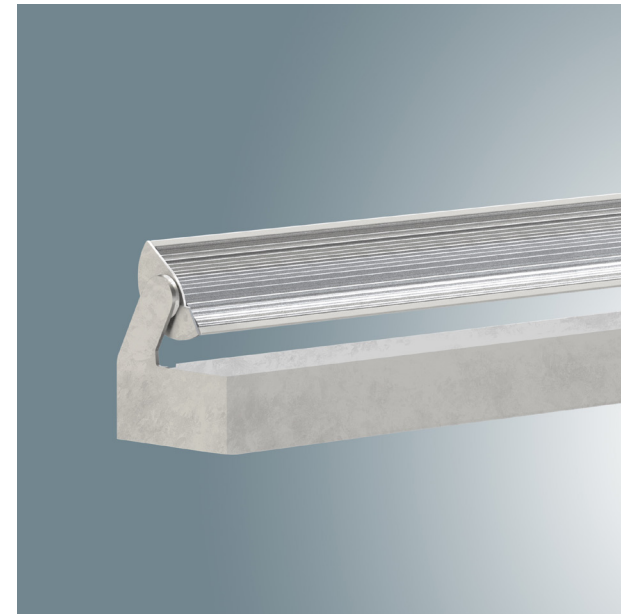
Cove Dimensions

(maximum candlepower aimed 15° above horizontal)

| Sightline | 0° (horiz. cutoff) | 5° | 10° |
|----------------|---|-----------------|-----------------|
| Width (inside) | 5-1/8" (130mm) | 4-1/4** (108mm) | 4-1/4** (108mm) |
| Lip (inside) | 4" (102mm) | 3-5/8" (92mm) | 3-1/4" (83mm) |
| Setback | 12" (305mm) min. recommended for 175mA, 18" (457mm) for 350mA; 24" (610mm) for 700mA. | | |

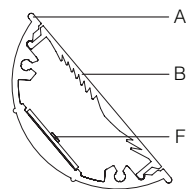
*Minimum for removal of wireway cover.

Note: Finish interior of cove matte white for best results.



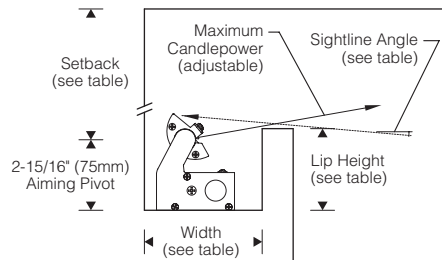
Optical Assembly

1:2 Scale



Cove

1:8 Scale



Specifications

- A** Serviceable extruded aluminum heat sink/housing
- B** Extruded acrylic beam shaping lens
- C** Stainless steel end plates with interlocking tabs
- D** Rotation locking tab with locking set screw
- E** Aluminum side arm with adjustable mounting tab (fasteners by others)
- F** Constant current LED board
- G** Conduit entry (one each end, conduit and connectors by others)
- H** Driver/housing joiner screw (one per fixture)
- I** Extruded aluminum driver housing and drivers
- J** Supply conduit and connections by others

Housing and Optic Assembly:

Extruded aluminum heat sink/optic housing. Exterior heat sink anodized for maximum emissivity. Stainless steel end plates. Extruded acrylic refractive semi-diffuse asymmetric beam shaping lens. Extruded aluminum driver housing and removable cover.

Finish:

Optic assembly – bright anodized aluminum. Side arms and driver compartment – mill finish aluminum or painted semigloss white for natatorium option. Painted surfaces receive a 6-stage pretreatment process prior to electrostatically applied baked powder enamel. All hardware – stainless steel.

Mounting:

Lay-in installation, side arms with mounting tabs can be base or wall mounted (fasteners by others). Luminaires can be mounted individually or joined together to form a continuous row. Optical assembly aiming is adjustable and is fixed in position by rotation locking screws at each side arm. When mounted in a continuous row, assemblies lock together allowing all in the row to be aimed together.

Fixture weight: 1.7 lb/ft (2.5 kg/m).

Electrical:

Use 90°C wire for supply connections. Integral electronic Class II drivers. For complete driver specifications, see website, reference document [MA-1303](#). Driver/wireway compartment includes one conduit entry at each end. Channel cover is removable for access to driver and wiring. Luminaires may be butted end-to-end (connectors by others) for wiring. Optional #12 AWG prewired modular through-wiring with quick connectors. Optional , compatible dimming controls (by others). See website for dimming compatibility and specifications.

Standard:

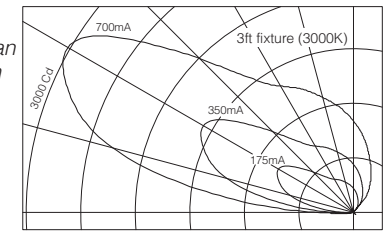
UL listed or CSA certified for damp locations. For natatorium use, specify **OP** or **PK** option. 5 year warranty, maximum ambient temperature 45°C (113°F).

Features

- Tunable White Now Available!
- Asymmetric distribution – uniform surface illumination
- Wide lateral distribution – no socket shadows
- Fully adjustable and lockable optic assembly
- Integral driver with optional pre-wired harness
- Slim profile – ideal for tight coves

Performance

Precisely extruded acrylic lens produces an asymmetric distribution ideal for illuminating ceilings evenly.



L90(10k) > 60,000 hrs. @ 25°C per TM-21

For LM79 and photometric reports, visit thelightingquotient.com

