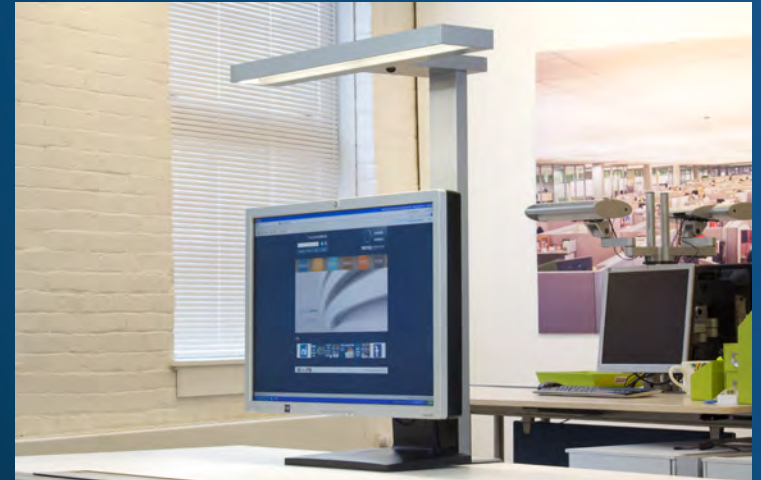


PRODUCT **L305**

tambient® LED
for single workstations

All-in-one task/ambient luminaire, slim profile outrigger design for open office workstations with VDTs



SOLVING FOR LIGHT

elliptipar®
tambient®



THE LIGHTING **QUOTIENT**®

www.TheLightingQuotient.com

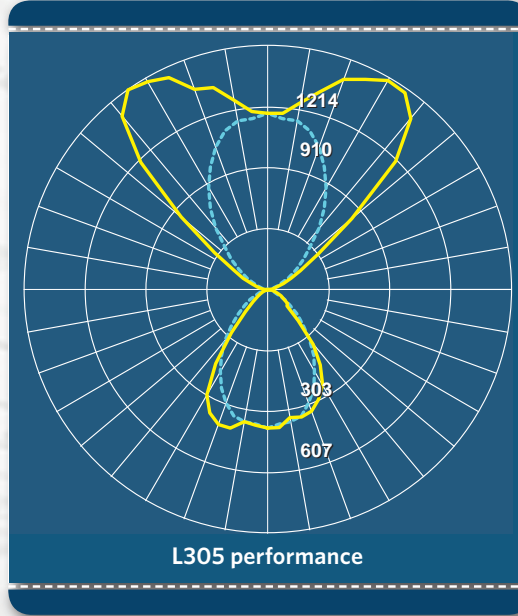
PRODUCT L305

tambient® LED task/ambient



your 4-digit Quickfinder code at www.TheLightingQuotient.com

single workstation luminaires



- **Versatile and effective** lighting system consists of portable task/ambient luminaires that provide light for both the work surface (task) and surrounding office area (ambient)
- **Integrates with most furniture systems;** order stanchions and bases separately
- **Works in spaces with low ceilings** or no ceilings
- **Plugs into new or existing workstation power receptacles**
- **Maintains a balance** of task and ambient light while limiting energy consumption
- **Local personal control** of each task light
- **Collective zone control of uplights** for institutional operation and energy management

SOLVING FOR LIGHT

elliptipar®
tambient®



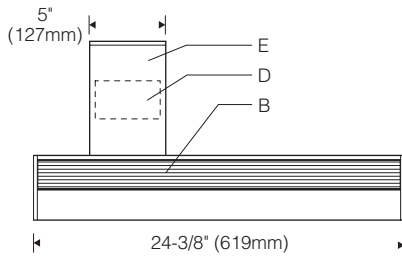
THE LIGHTING **QUOTIENT**®

114 Boston Post Road
West Haven, CT 06516
203.931.4455
203.931.4464

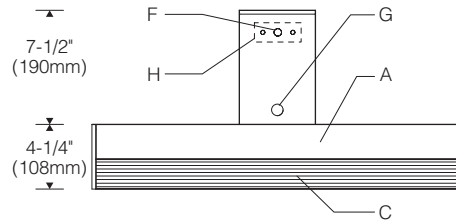


© 2015 Sylvan R. Shemitz Designs, LLC

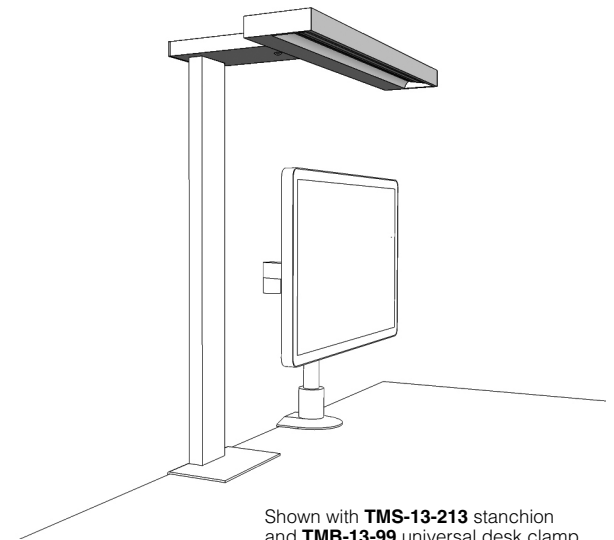
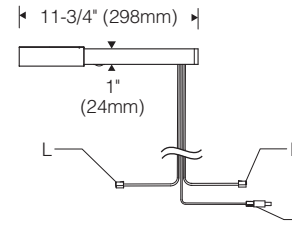
Top View (with left offset arm)



Bottom View (with center arm)

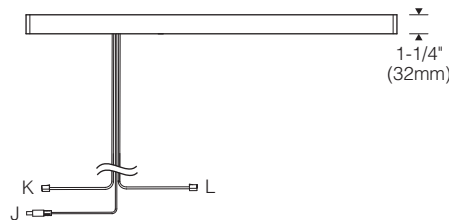


End View

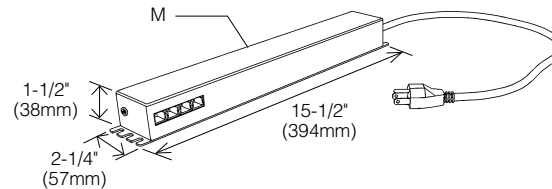


Shown with **TMS-13-213** stanchion and **TMB-13-99** universal desk clamp mounting base. Order stanchion and mounting base separately.

Front View (with left offset arm)



Power Supply



Specifications

- | | | | |
|--|--|---|--|
| A Extruded aluminum housing and arm | D Multi-mode controller | H Accepts 1" x 3" stanchion (order stanchion separately) | L 6ft RJ11/RJ45 sensor cable (options FM and MS) |
| B Snap-in acrylic upright lens | E Snap-in aluminum access cover | J 6ft low-voltage power cable with barrel connector | M HPF power supply and enclosure with 4 control ports and 6ft cord and plug |
| C Snap-in acrylic task lens | F Cable exit | K 6ft RJ11 switch/dim cable | |
| | G Pushbutton switch/dimmer | | |

Features

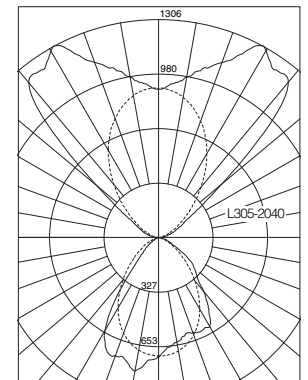
- All-in-one task/ambient luminaire with outrigger design for workstations with VDTs
- Removable light engines for service and upgrade
- Independent control of upright and task light
- Connects to accessory control hub for wireless control by remote sensors and building automation systems

Performance

Beam shaping technology and precision extruded acrylic lenses control glare and achieve superior ceiling coverage and work surface uniformity.

Contact factory for complete photometrics and lumen maintenance reports.

1306 max. candela located in 0°-180° plane at 150° above nadir.
 — 0°-180° vertical plane
 - - 90°-270° vertical plane



L70(9k) > 54,000 hrs per TM-21

Finish:

Painted surfaces: 6 stage pretreatment and electrostatically applied baked powder enamel for stable, long-lasting and corrosion resistant finish.

Optical Assembly:

Two (2) light engines with extruded aluminum heat sinks and holographic diffusers; removable for service or upgrade. Two (2) precision extruded acrylic glare control lenses deliver symmetric batwing upright and asymmetric forward throw task light distributions for broad coverage and visual comfort.

Emitters:

3500K mid-power LEDs. 3000K and 4000K emitters available on request.

Mounting:

Predrilled for mounting to Style TMS-13 support stanchion. Required stanchion and stanchion base ordered and priced separately.

Electrical:

120VAC/24VDC high power factor power supply in remote mounted aluminum enclosure with 5.5 x 2.1mm female barrel jack and 6ft 18/3 SJT power cord with NEMA 5-15P grounded plug head.

Control:

Integral solid state multi-mode controller, factory preset for shared office applications. Pushbutton for ON/OFF and dimming control of task light. RJ11 switch/dim cable and accessory wireless control hub connect to power supply control ports for remote switching and dimming of upright. Order wireless control hub separately. Dimming range 100%-5%. Auto-off control of task light via upright status monitoring and integral timer or optional plug-and-play workstation motion sensor.

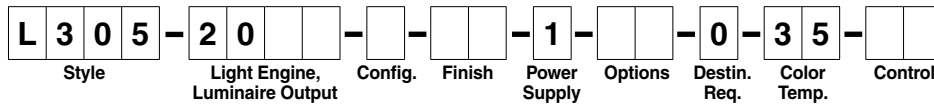
Standard:

UL listed or CSA certified for U.S. and Canada.



Sample number: L305-2040-1-PL-1-00-0-35-00 Project: _____

Type: _____



Style

L305 Single-sided slim profile task/ambient light with integral arm for stanchion mounting

Light Engine and Luminaire Output

- 2020** 84 mid-power emitters, 42 emitters down, 42 emitters up
Input: 40W maximum total, including power supply
Output: 1307 lm (down), 1257 lm (up)
- 2040** 126 mid-power emitters, 42 emitters down, 84 emitters up
Input: 60W maximum total, including power supply
Output: 1307 lm (down), 2514 lm (up)

Configuration

- 1** Center arm
- 2** Offset arm left (for stanchion shifted 6" off center)
- 3** Offset arm right (for stanchion shifted 6" off center)

Finish

- 02** Semigloss white
- 08** Semigloss black
- PL** Semigloss platinum
- XX** Custom color match

Power Supply

- 1** High-power factor 120VAC/24VDC plug-in power supply with 6' power cord and NEMA 5-15P grounded plug head. Includes quick-connect barrel jack for detachable 24-volt luminaire power cable and (4) RJ11 ports for switch/dim control interconnect cables. Order interconnect cables separately,

Options

- Required stanchion and base ordered and priced separately.
- 00** No options
- FA** Luminaire factory assembled to stanchion and base. Order stanchion and base separately.
- MS** Plug-in motion sensor
- FM** Factory assembled (see **FA** above) with plug-in motion sensor
- XX** Custom modification (specify)

Destination Requirement

- 0** UL listed or CSA certified for U.S. and Canada

Color Temperature

35 3500K, 80+ CRI
Note: 3000K and 4000K emitters available on request.

Control

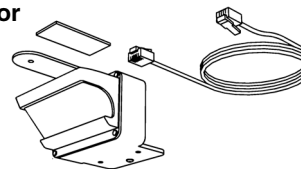
- 00** Integral solid state multi-mode controller, factory configured for shared office operation. Pushbutton for ON/OFF and dimming control of task light. Auto-OFF control of task light via uplight status monitoring and onboard 11-hour task light timer or optional plug-and-play workstation motion sensor. When sensor is installed, integral standby timer provides 30 second auto-ON period after vacancy time-out. RJ11 switch/dim cable for 24VDC remote switching and 0-10V dimming of uplight via accessory CCH wireless control hub. Order hub separately. Dimming range 100%-5%. Manual ON override via pushbutton activates task light for one hour when the uplight is in remote OFF mode, 10 second fade to OFF alerts user if additional time is needed. Independent end-of-life timer for each aperture signals recommended light engine replacement after 50,000 hours of use.
- 11** Same as above except factory configured for private office operation with additional pushbutton for user control of uplight and auto-OFF control of task light and uplight via optional plug-and-play motion sensor.



[DOE Lighting Facts label for L305, 3500K/80+CRI shown.](#)

Workstation Motion Sensor

(options **MS** and **FM**)
24V PIR motion sensor. Mount to underside of work surface with adhesive pad or screw (provided). Includes 9ft RJ11/RJ45 sensor cable.



Required Mounting Stanchion

Mounting stanchion TMS-13 is required for Style L305 stanchion mounted luminaire — ordered and priced separately. A range of stanchion sizes accommodate mounting to work surfaces and workstation panels of various heights. Go to www.TheLightingQuotient.com or select link below for details. Choose a size that combines with a **TMB-13** mounting base (below) to position the luminaire at the desired height. Add finish code when ordering. Consult factory for sizes not shown.

TMS-13 Mounting stanchion, 1" x 3". Includes 2 mounting screws for luminaire attachment.

Required Mounting Base

Mounting base TMB-13 is required for Style L305 stanchion mounted luminaire — ordered and priced separately. A range of stanchion bases integrate with most work surfaces, select workstation panels, and system-specific furniture details. Go to www.TheLightingQuotient.com or select link below for details. Add finish code when ordering. Consult factory for custom integrations.

TMB-13 Mounting base for **TMS-13** mounting stanchion. Includes 2 mounting screws for stanchion attachment.

Accessories

Wireless Control Hub

Connect to up to 12 **tambient** luminaires.

- CCH-EN-02** Manual-ON, dimming enabled
- CCH-EN-04** Auto-ON, dimming enabled

Wireless Ceiling Sensors

Note: Sensors link to wireless control hub(s).

- CMS-EN-04** Small motion occupancy sensor
- CMS-EN-06** Small motion vacancy sensor
- CLS-EN-02** Daylight sensor

Wireless Wall Switch/Dimmers

Note: Wall switch/dimmers link to wireless control hub(s).

- CWS-EN-03** Single gang, single rocker
- CWS-EN-04** Single gang, dual rocker

Control Interconnect Cables

- CRJ-11-010** 10-ft cable
- CRJ-11-015** 15-ft cable
- CRJ-11-025** 25-ft cable



tambient from The Lighting Quotient
114 Boston Post Road, West Haven, Connecticut 06516, USA
Voice 203.931.4455 • Fax 203.931.4464 • thelightingquotient.com

Certain products illustrated may be covered by applicable patents and patents pending. These specifications supersede all prior publications and are subject to change without notice. Copyright © 2018 Sylvan R. Shemitz Designs, LLC, all rights reserved.

tambient® **L305** LED



*All-in-one task/ambient luminaire,
slim profile design for open office
workstations with VDTs*

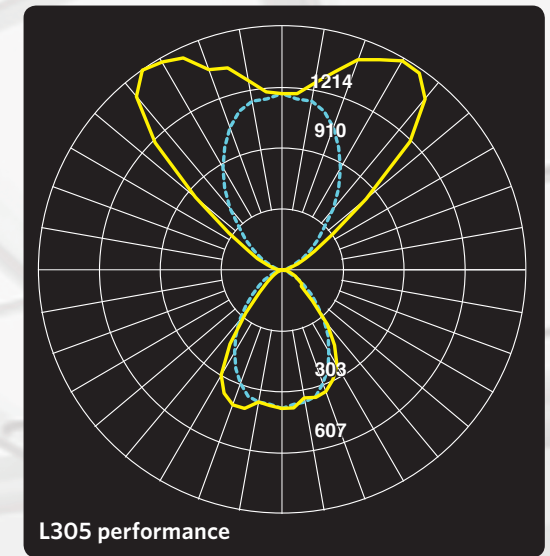
task/ambient mast mount for single workstations



SOLVING FOR LIGHT
thelightingquotient.com



tambient® **L305 LED** *task/ambient mast mount for single workstations*



- **Versatile and effective** lighting system consists of portable task/ambient luminaires that provide light for both the work surface (task) and surrounding office area (ambient)
- **All-in-one task/ambient luminaire** with support mast, mounting base, and two dynamic VDT support arms
- **Integrates with most furniture systems;** 4-way flex base or a desk clamp base with 4-port USB hub
- **Works in spaces with low ceilings** or no ceilings
- **Plugs in** to new or existing workstation power receptacles
- **Maintains a balance** of task and ambient light while limiting energy consumption
- **Local personal control** of each task light
- **Collective zone control of uplights** for institutional operation and energy management

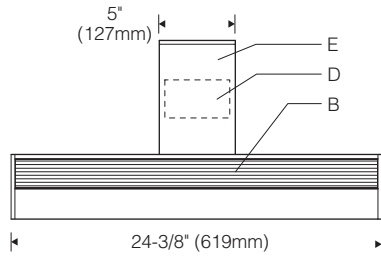


elliptipar
there is no equal™

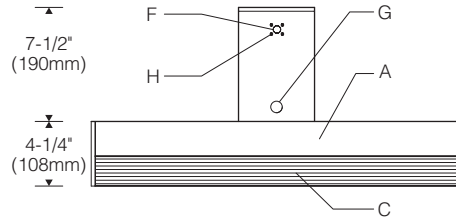
tambient
lighting for work™

SOLVING FOR LIGHT
thelightingquotient.com  800-847-6067

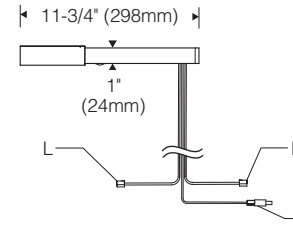
Top View



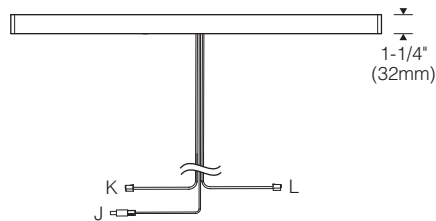
Bottom View



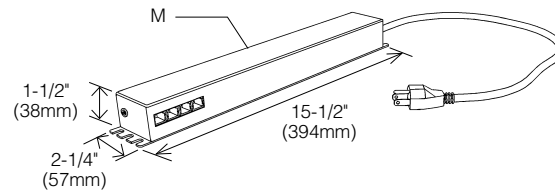
End View



Front View



Power Supply



Shown with **AMA-05-BU-PL** monitor arm support system. Order support system separately. Monitors not included.

Specifications

- | | | | |
|--|--|---|--|
| A Extruded aluminum housing and arm | E Snap-in aluminum access cover | H Accepts mast support with 7/8"x7/8" mounting pattern | L 6ft RJ11 sensor cable (options MS and FM) |
| B Snap-in acrylic uplight lens | F Cable exit | J 6ft low-voltage power cable with barrel connector | M HPF power supply and enclosure with 4 control ports and 6ft cord and plug |
| C Snap-in acrylic task lens | G Pushbutton switch/dimmer | K 6ft RJ11 switch/dim cable | |
| D Multi-mode controller | | | |

Finish:

Painted surfaces: 6 stage pretreatment and electrostatically applied baked powder enamel for stable, long-lasting and corrosion resistant finish.

Optical Assembly:

Two (2) light engines with extruded aluminum heat sinks and holographic diffusers; removable for service or upgrade. Two (2) precision extruded acrylic glare control lenses deliver symmetric batwing uplight and asymmetric forward throw task light distributions for broad coverage and visual comfort.

Emitters:

3500K mid-power LEDs. 3000K and 4000K emitters available on request.

Mounting:

Mounting hole and anti-rotation keyway for Style **AMA** monitor arm masts (see pg. TA14.3). Required monitor arm mast ordered and priced separately. **Note:** Not compatible with **TMH** mounting stanchions. Refer to pg. TA14.0 for Style L305 luminaires configured for stanchion mounting.

Electrical:

120VAC/24VDC high power factor power supply in remote mounted aluminum enclosure with 5.5 x 2.1mm female barrel jack and 6ft 18/3 SJT power cord with NEMA 5-15P grounded plug head.

Control:

Integral solid state multi-mode controller, factory preset for shared office applications. Pushbutton for ON/OFF and dimming control of task light. RJ11 switch/dim cable and accessory control hub connect to power supply control ports for remote switching and dimming of uplight. Order wireless control hub separately. Dimming range 100% - 5%. Auto-OFF control of task light via integral timer or optional plug-and-play workstation motion sensor.

Standard:

UL listed or CSA certified for U.S. and Canada.

Features

- All-in-one task/ambient luminaire for use with monitor arm mast
- Removable light engines for service and upgrade
- Independent control of uplight and task light
- Connects to accessory control hub for wireless control by remote sensors and building automation systems

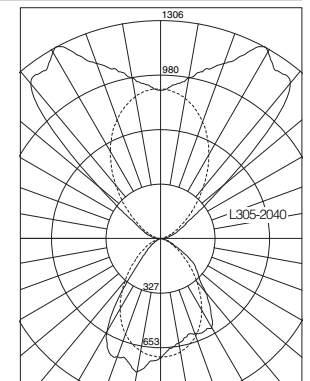
Performance

Beam shaping technology and precision extruded acrylic lenses control glare and achieve superior ceiling coverage and work surface uniformity.

Contact factory for complete photometrics and lumen maintenance reports.

1306 max. candela located in 0°-180° plane at 150° above nadir.

- 0°-180° vertical plane
- - 90°-270° vertical plane

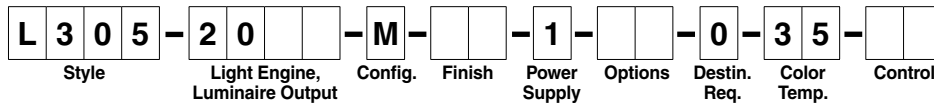


L70(9k) > 54,000 hrs per TM-21



Sample number: L305-2040-M-PL-1-00-0-35-00 Project: _____

Type: _____



Style

L305 Single-sided slim profile task/ambient light with integral arm for mast mounting

Light Engine and Luminaire Output

- 2020** 84 mid-power emitters, 42 emitters down, 42 emitters up
Input: 40W maximum total, including power supply
Output: 1307 lm (down), 1257 lm (up)
- 2040** 126 mid-power emitters, 42 emitters down, 84 emitters up
Input: 60W maximum total, including power supply
Output: 1307 lm (down), 2514 lm (up)

Configuration

M Center arm, for mounting to round or square mast support

Finish

- 02** Semigloss white
- 08** Semigloss black
- PL** Semigloss platinum
- XX** Custom color match

Power Supply

1 High-power factor 120VAC/24VDC plug-in power supply with 6' power cord and NEMA 5-15P grounded plug head. Includes quick-connect barrel jack for detachable 24-volt luminaire power cable and (4) RJ11 ports for switch/dim control interconnect cables. Order interconnect cables separately.

Options

Required mast and mounting base ordered and priced separately.

- 00** No options
- FA** Luminaire factory assembled to square mast or round mast-top fitting. Corresponding mounting support ordered separately.
- MS** Plug-in motion sensor
- FM** Factory assembled (see **FA** above) with plug-in motion sensor with sensor cable installed in mast
- XX** Custom modification (specify)

Destination Requirement

0 UL listed or CSA certified for U.S. and Canada

Color Temperature

35 3500K, 80+ CRI
Note: 3000K and 4000K emitters available on request.

Control

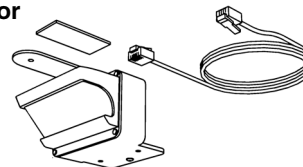
- 00** Integral solid state multi-mode controller, factory configured for shared office operation. Pushbutton for ON/OFF and dimming control of task light. Auto-OFF control of task light via uplight status monitoring and onboard 11-hour task light or optional plug-and-play workstation motion sensor. When sensor is installed, integral standby timer provides 30 second auto-ON period after vacancy time-out. RJ11 switch/dim cable for 24VDC remote switching and 0-10V dimming of uplight via accessory CCH wireless control hub. Order hub separately. Dimming range 100%-5%. Manual ON override via pushbutton activates task light for one hour when the uplight is in remote OFF mode, 10 second fade to OFF alerts user if additional time is needed. Independent end-of-life timer for each aperture signals recommended light engine replacement after 50,000 hours of use.
- 11** Same as above except factory configured for private office operation with additional pushbutton for user control of uplight and auto-OFF control of task light and uplight via optional plug-in motion sensor.



DOE Lighting Facts label for L305, 3500K/80+CRI shown.

Workstation Motion Sensor

(options **MS** and **FM**)
24V PIR motion sensor. Mount to underside of work surface with adhesive pad or screw (provided). Includes 9ft RJ11/RJ45 sensor cable.



Required Mast and Mounting Base

Mast and mounting base AMA-05, AMA-10, AMA-1W, AMA-2W, AMA-3S, or AMA-3W is required for Style L305 mast-mounted luminaire — ordered and priced separately. Go to www.TheLightingQuotient.com or select a link below for details. Add finish code when ordering.

- AMA-05-00** Standard base with square mast and 2 dynamic arms for VDTs 5 to 25 lbs each.
- AMA-05-BU** USB base with square mast and 2 dynamic arms for VDTs 5 to 25 lbs each.
- AMA-10-00** Standard base with round mast and pivot bracket for one VDT up to 50"/30 lbs.
- AMA-10-BU** USB base with round mast and pivot bracket for one VDT up to 50"/30 lbs.
- AMA-1W-00** Standard base with round mast and horizontal arm for one VDT up to 30"/20 lbs.
- AMA-1W-BU** USB base with round mast and horizontal arm for one VDT up to 30"/20 lbs.
- AMA-2W-00** Standard base with round mast and 2 horizontal arms for VDTs up to 30"/20 lbs each.
- AMA-2W-BU** USB base with round mast and 2 horizontal arms for VDTs up to 30"/20 lbs each.
- AMA-3S-00** Standard base with round mast, pivot bracket and 2 horizontal arms for VDTs up to 24"/15 lbs each.
- AMA-3S-BU** USB base with round mast, pivot bracket and 2 horizontal arms for VDTs up to 24"/15 lbs each.
- AMA-3W-00** Standard base with round mast, pivot bracket and 2 horizontal arms for VDTs up to 30"/15 lbs each.
- AMA-3W-BU** USB base with round mast, pivot bracket and 2 horizontal arms for VDTs up to 30"/15 lbs each.

Accessories

Wireless Control Hub

Connect to up to 12 **tambient** luminaires. See CCH data sheet for information regarding compatible wireless sensors and switches.

- CCH-EN-02** Manual-ON, dimming enabled
- CCH-EN-04** Auto-ON, dimming enabled

Control Interconnect Cables

- CRJ-11-010** 10-ft cable
- CRJ-11-015** 15-ft cable
- CRJ-11-025** 25-ft cable

Certain products illustrated may be covered by applicable patents and patents pending. These specifications supersede all prior publications and are subject to change without notice. Copyright © 2018 Sylvan R. Shemitz Designs, LLC, all rights reserved.



tambient from The Lighting Quotient
114 Boston Post Road, West Haven, Connecticut 06516, USA
Voice 203.931.4455 • Fax 203.931.4464 • thelightingquotient.com

PRODUCT

L306

tambient® LED for dual workstations

*All-in-one task/ambient luminaire,
slim profile outrigger design for open
office workstations with VDTs*



SOLVING FOR LIGHT

elliptipar®
tambient®



THE LIGHTING **QUOTIENT**®

www.TheLightingQuotient.com

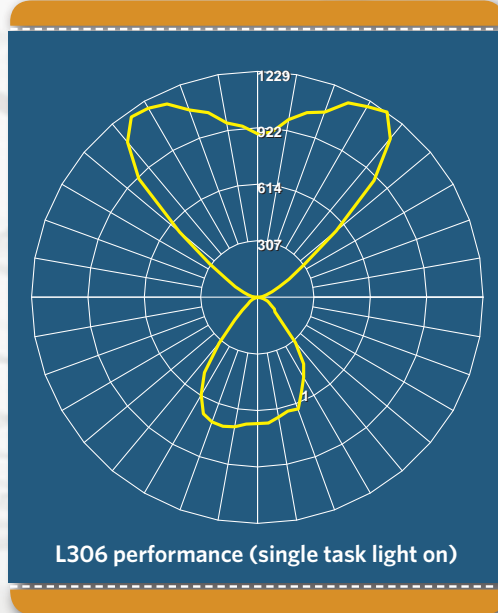
PRODUCT L306

tambient® LED task/ambient



your 4-digit Quickfinder code at www.TheLightingQuotient.com

dual workstation luminaires



- **Versatile and effective** lighting system consists of portable task/ambient luminaires that provide light for both the work surface (task) and surrounding office area (ambient)
- **Integrates with most furniture systems;** order stanchions and bases separately
- **Works in spaces with low ceilings** or no ceilings
- **Plugs into new or existing workstation power receptacles**
- **Maintains a balance of task and ambient light** while limiting energy consumption
- **Local personal control** of each task light
- **Collective zone control of uplights** for institutional operation and energy management

SOLVING FOR LIGHT

elliptipar®
tambient®



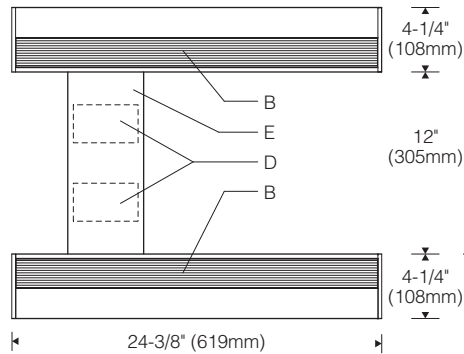
THE LIGHTING **QUOTIENT**®

114 Boston Post Road
West Haven, CT 06516
203.931.4455
203.931.4464

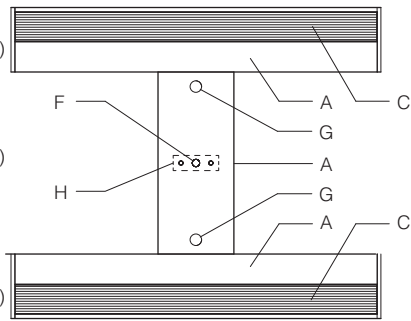


© 2015 Sylvan R. Shemitz Designs, LLC

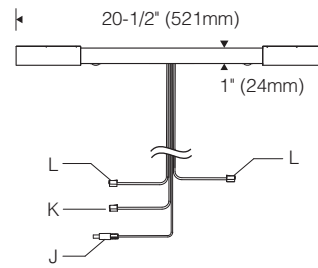
Top View (with offset bridge)



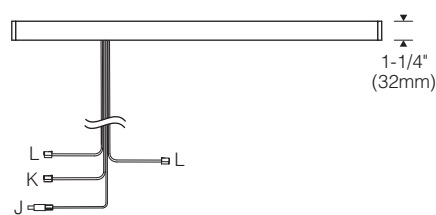
Bottom View (with center bridge)



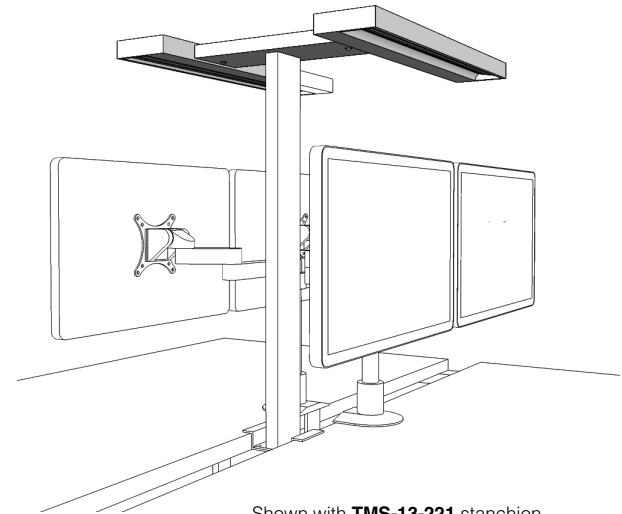
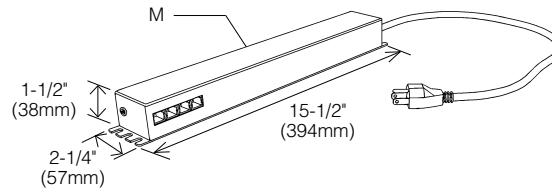
End View



Front View (with offset bridge)



Power Supply



Shown with **TMS-13-221** stanchion and **TMB-13-06** mounting base. Order stanchion and mounting base separately.

Specifications

- | | | | |
|---|--|---|--|
| A Extruded aluminum housing and bridge | D Multi-mode controller | H Accepts 1" x 3" support stanchion (order stanchion separately) | L 6ft RJ11/RJ45 sensor cable (options FM and MS) |
| B Snap-in acrylic upright lens | E Snap-in aluminum access cover | J 6ft low-voltage power cable with barrel connector | M HPF power supply and enclosure with 4 control ports and 6ft cord and plug |
| C Snap-in acrylic task lens | F Cable exit | K 6ft RJ11 switch/dim cable | |
| | G Pushbutton switch/dimmer | | |

Finish:

Painted surfaces: 6 stage pretreatment and electrostatically applied baked powder enamel for stable, long-lasting and corrosion resistant finish.

Optical Assembly:

Four (4) light engines with extruded aluminum heat sinks and holographic diffusers; removable for service or upgrade. Four (4) precision extruded acrylic glare control lenses deliver symmetric batwing uplight and asymmetric forward throw task light distributions for broad coverage and visual comfort.

Emitters:

3500K mid-power LEDs. 3000K and 4000K emitters available on request.

Mounting:

Predrilled for mounting to Style TMS-13 support stanchion. Required stanchion and stanchion base ordered and priced separately.

Electrical:

120VAC/24VDC high power factor power supply in remote mounted aluminum enclosure with 5.5 x 2.1mm female barrel jack and 6ft 18/3 SJT power cord with NEMA 5-15P grounded plug head.

Control:

Integral solid state multi-mode controllers, factory preset for shared office applications. Pushbuttons for individual ON/OFF and dimming control of task lights. RJ11 switch/dim cable and accessory wireless control hub connect to power supply control ports for remote switching and dimming of uplights. Order wireless control hub separately. Dimming range 100%-5%. Auto-OFF control of each task light via uplight status monitoring and integral timer or optional plug-and-play workstation motion sensors.

Standard:

UL listed or CSA certified for U.S. and Canada.

Features

- All-in-one task/ambient luminaire with outrigger design for workstations with VDTs
- Removable light engines for service and upgrade
- Independent control of uplight and each task light
- Connects to accessory control hub for wireless control by remote sensors and building automation systems

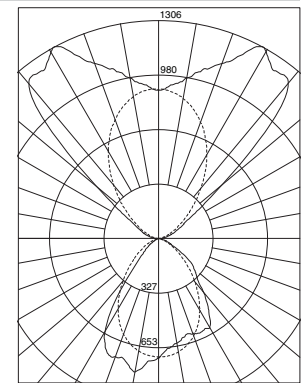
Performance

Beam shaping technology and precision extruded acrylic lenses control glare and achieve superior ceiling coverage and work surface uniformity.

Contact factory for complete photometrics and lumen maintenance reports.

1306 max. candela located in 0°-180° plane at 150° above nadir. Shown with one task light on.

- 0°-180° vertical plane
- - 90°-270° vertical plane

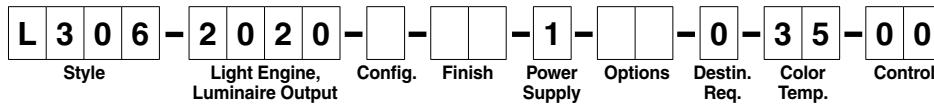


L70(9k) > 54,000 hrs per TM-21



Sample number: L306-2020-1-PL-1-00-0-35-00 Project: _____

Type: _____



Style

L306 Dual-sided slim profile bench light with integral bridge for stanchion mounting

Light Engine and Luminaire Output

2020 168 mid-power emitters, 84 emitters down, 84 emitters up
 Input: 80W maximum total, including power supply.
 Output: 2614 lm (down), 2514 lm (up).

Configuration

- 1 Center bridge
- 2 Offset bridge (for stanchion shifted 6" off center)

Finish

- 02 Semigloss white
- 08 Semigloss black
- PL Semigloss platinum
- XX Custom color match

Power Supply

1 High-power factor 120VAC/24VDC plug-in power supply with 6' power cord and NEMA 5-15P grounded plug head. Includes quick-connect barrel jack for detachable 24-volt luminaire power cable.

Options

Required mounting support ordered and priced separately.

- 00 No options.
- FA Luminaire factory assembled to stanchion and base. Order stanchion and base separately.
- MS Plug-in motion sensors (2)
- FM Factory assembled (see FA above) with (2) plug-in motion sensors
- XX Custom modification (specify)

Destination Requirement

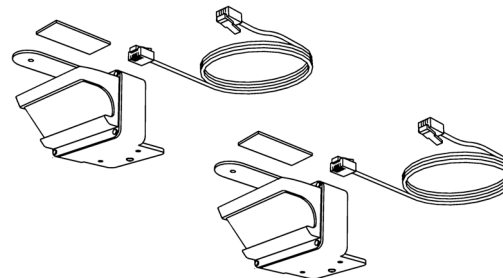
0 UL listed or CSA certified for U.S. and Canada

Color Temperature

35 3500K, 80+ CRI
Note: 3000K and 4000K emitters available on request.

Control

00 Integral solid state multi-mode controllers, factory configured for shared office operation. Pushbuttons for individual ON/OFF and dimming control of task lights. Auto-OFF control of task lights via uplight status monitoring and onboard 11-hour task light timer or optional plug-and-play workstation motion sensors. When sensors are installed, integral standby timers provide 30 second auto-ON period after vacancy time-out. RJ11 switch/dim cable for 24VDC remote switching and 0-10V dimming of uplight via accessory CCH wireless control hub. Order hub separately. Dimming range 100%-5%. Manual ON override via pushbutton activates task light for one hour when the uplights are in remote OFF mode, 10 second fade to OFF alerts user if additional time is needed. Independent end-of-life timer for each aperture signals recommended light engine replacement after 50,000 hours of use.



Workstation Motion Sensors (options MS and FM)
 (2) 24V PIR motion sensors. Mount to underside of work surface with adhesive pads or screws (provided). Includes (2) 9ft RJ11/RJ45 sensor cables.

Required Mounting Stanchion

Mounting stanchion TMS-13 is required for Style L306 stanchion mounted luminaire — ordered and priced separately. A range of stanchion sizes accommodate mounting to work surfaces and workstation panels of various heights. Go to www.TheLightingQuotient.com or select link below for details. Choose a size that combines with a **TMB-13** mounting base (below) to position the luminaire at the desired height. Add finish code when ordering. Consult factory for sizes not shown.

TMS-13 Mounting stanchion, 1" x 3". Includes 2 mounting screws for luminaire attachment.

Required Mounting Base

Mounting base TMB-13 is required for Style L306 stanchion mounted luminaire — ordered and priced separately. A range of stanchion bases integrate with most work surfaces, select workstation panels, and system-specific furniture details. Go to www.TheLightingQuotient.com or select link below for details. Add finish code when ordering. Consult factory for custom integrations.

TMB-13 Mounting base for **TMS-13** mounting stanchion. Includes 2 mounting screws for stanchion attachment.

Accessories

Wireless Control Hub

Connect to up to 12 **tambient** luminaires.

- CCH-EN-02** Manual-ON, dimming enabled
- CCH-EN-04** Auto-ON, dimming enabled

Wireless Ceiling Sensors

- Note:** Sensors link to wireless control hub(s).
- CMS-EN-04** Small motion occupancy sensor
 - CMS-EN-06** Small motion vacancy sensor
 - CLS-EN-02** Daylight sensor

Wireless Wall Switch/Dimmers

Note: Wall switch/dimmers link to wireless control hub(s).

- CWS-EN-03** Single gang, single rocker
- CWS-EN-04** Single gang, dual rocker

Control Interconnect Cables

- CRJ-11-010** 10-ft cable
- CRJ-11-015** 15-ft cable
- CRJ-11-025** 25-ft cable



tambient from The Lighting Quotient
 114 Boston Post Road, West Haven, Connecticut 06516, USA
 Voice 203.931.4455 • Fax 203.931.4464 • thelightingquotient.com

Certain products illustrated may be covered by applicable patents and patents pending. These specifications supersede all prior publications and are subject to change without notice. Copyright © 2018 Sylvan R. Shemitz Designs, LLC, all rights reserved.